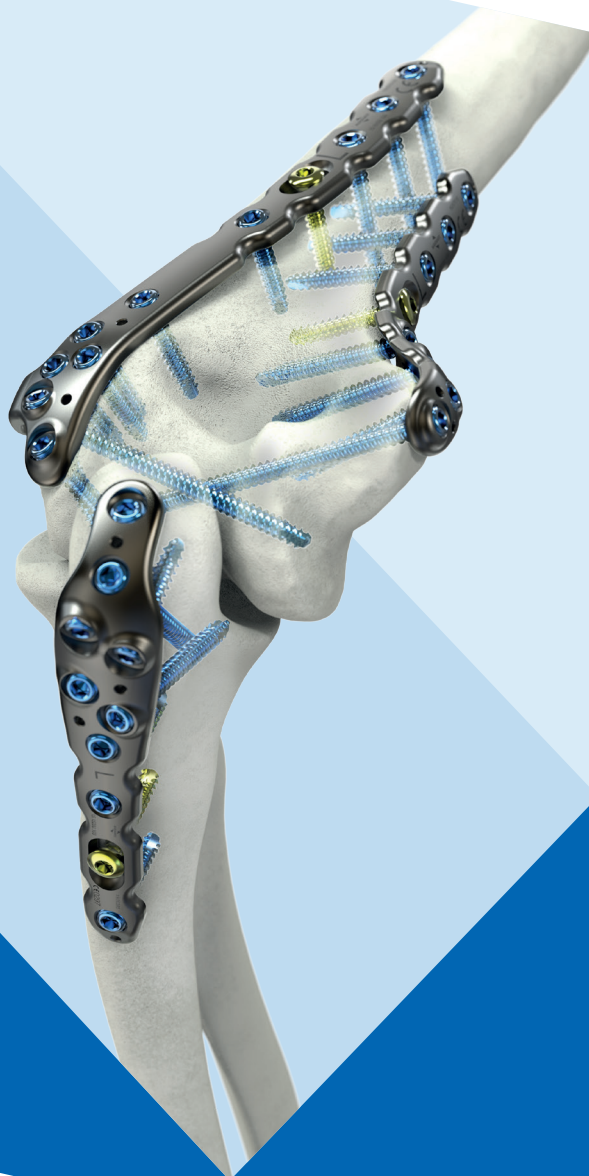


# WINSTA-E



## Elbow / Olecranon Plating System

With the WINSTA-E system you receive a new plate / screw system for the treatment of fractures, pseudarthroses and osteotomies. The precisely reconstructed anatomical shapes of the plates allow the anatomy of the elbow to be reconstructed perfectly in the case of complex fractures.

All screw holes can be filled with 2.7 / 3.5 mm locking polyaxial or standard cortical and cancellous bone screws.

# WINSTA-E

## Distal Humerus Plate posterolateral

Distal flattened chamfer for easier insertion of the plate

Anatomical design distal and in the shaft area

Stability in the fracture zone

Lateral support of the condyles

Five screw options distal posterior for high flexibility in screw placement

Versatile screw placement through the polyaxial screw holes

One screw lateral

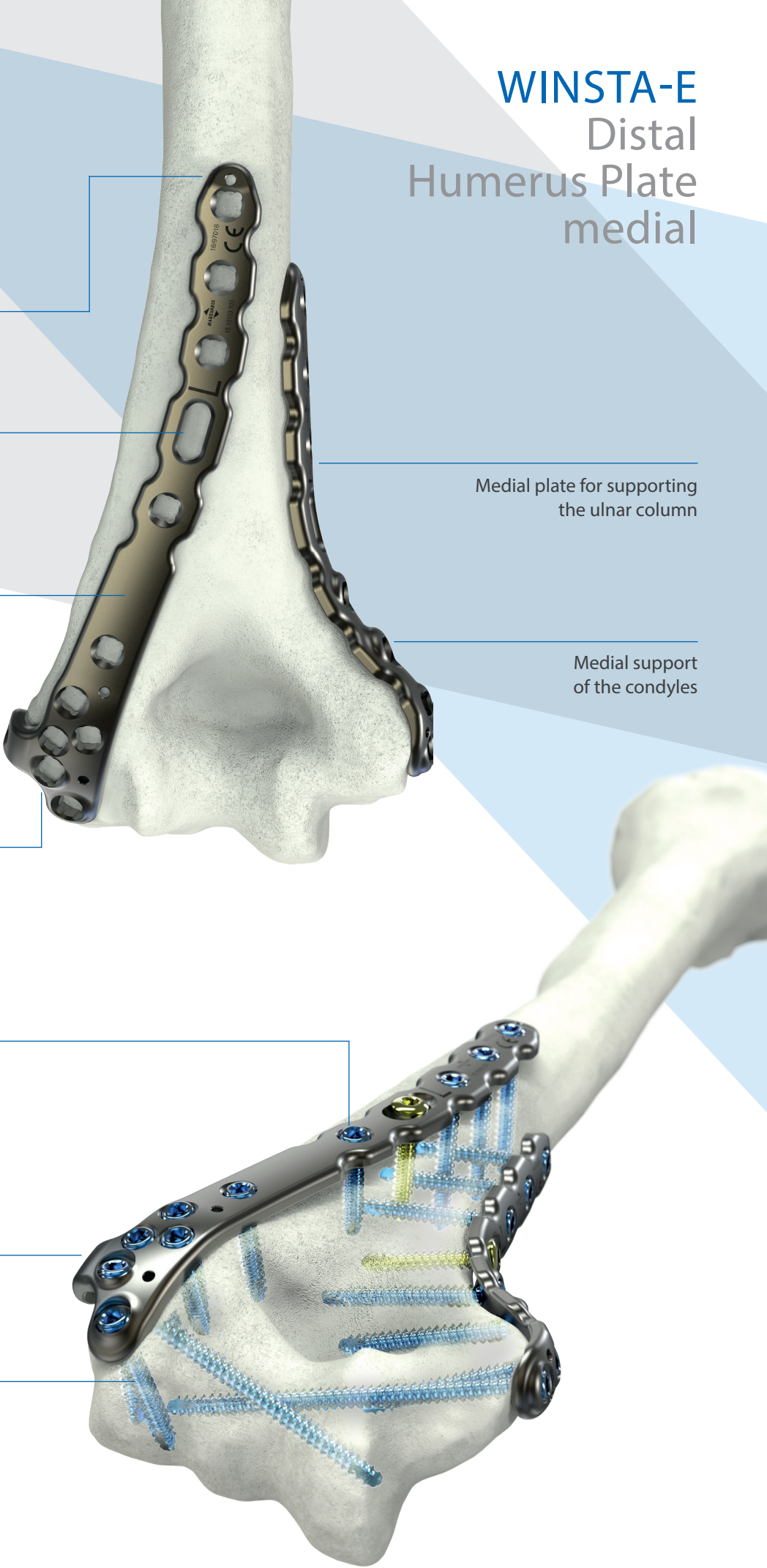
Capitulum humeri with two screws fixed, with one screw placed far distal

# WINSTA-E

## Distal Humerus Plate medial

Medial plate for supporting the ulnar column

Medial support of the condyles



The home run screw allows fixation of the coronoid process

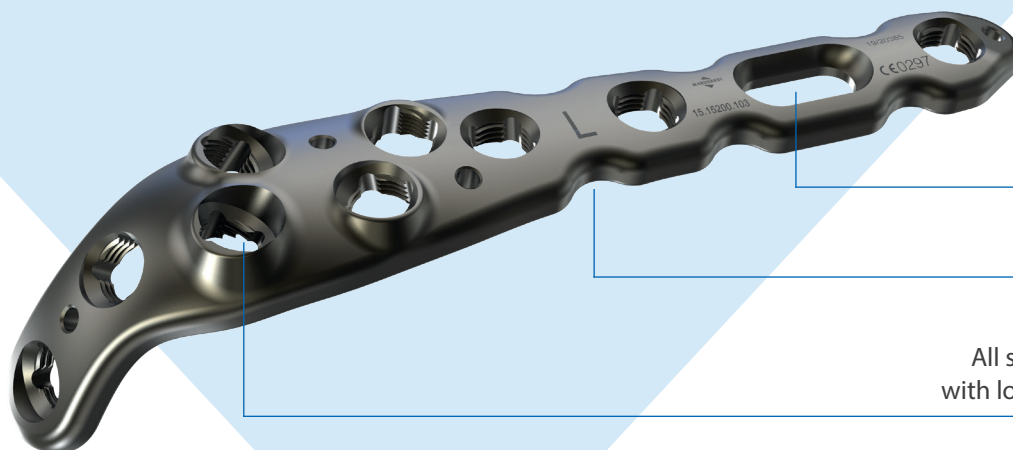
No protruding screw heads and rounded plate design for soft tissue protection

Distal flattened chamfer for easier insertion of the plate

Secure fixing due to free choice of screw dimensions  
Ø 2.7 mm and 3.5 mm



## WINSTA-E Olecranon Plate

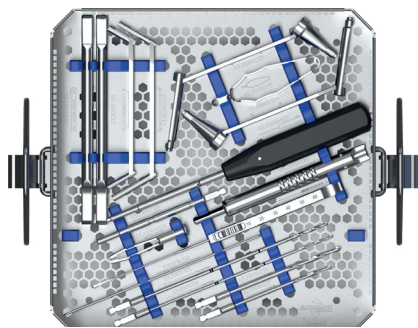


The oblong hole allows axial compression

Notches in the shaft

All screw holes can be inserted with locking and polyaxial screws

# WINSTA-E Elbow / Olecranon Plating System



WINSTA-E Instruments



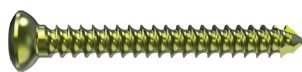
WINSTA-E Distal Humerus Plate, medial

15.15100.1XX(S) left	15.15100.0XX(S) right
Holes 8-14	
Length 87-161 mm	



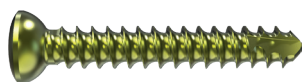
WINSTA-E Distal Humerus Plate, posterolateral

15.15103.1XX(S) left	15.15103.0XX(S) right
Holes 3-9	
Length 92-162 mm	



Cortical Screws Ø 2.7 mm, self-tapping

03.03527.XXX(S)	Length 10-50 mm
-----------------	-----------------



Cortical Screws Ø 3.5 mm, self-tapping

03.03612.XXX(S)	Length 10-60 mm
-----------------	-----------------



WINSTA-E Template

15.15xxx.xxx	1 = Implant
15.25xxx.xxx	2 = Template
Templates are available for all plate types	



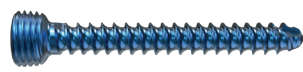
WINSTA-E Distal Humerus Plate, lateral

15.15102.1XX(S) left	15.15102.0XX(S) right
Holes 4-8	
Length 83-135 mm	



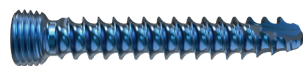
WINSTA-E Olecranon Plate

15.15200.0XX(S) left	15.15200.0XX(S) right
Holes 3-9	
Length 81-156 mm	



Locking Cortical Screws Ø 2.7 mm, self-tapping

03.05527.XXX(S)	Length 10-60 mm
-----------------	-----------------



Locking Cortical Screws Ø 3.5 mm, self-tapping

03.05612.XXX(S)	Length 10-60 mm
-----------------	-----------------

You can also find us on social networks:



Note:  
This description is not sufficient for immediate application of the instruments. Further information is available in the detailed surgical technique.  
Maintenance, care and preparation of Marquardt instruments can be found in the corresponding instructions.