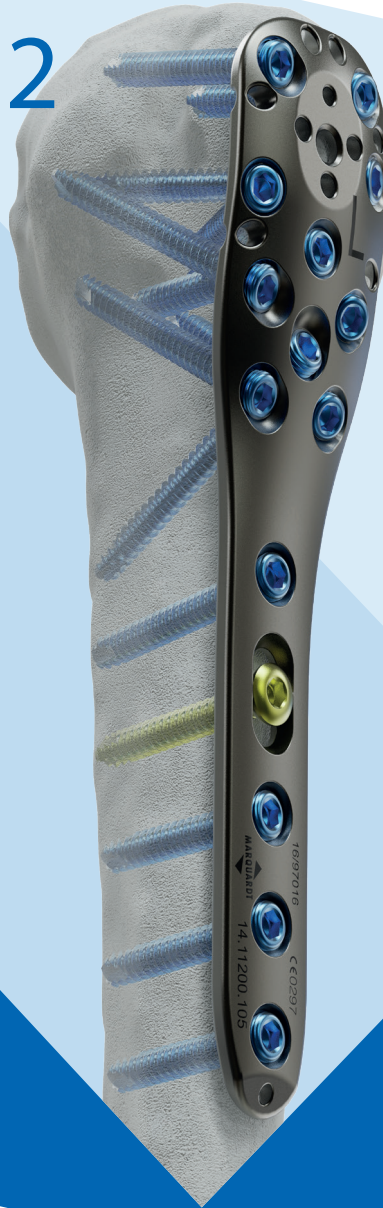


# WINSTA-PH2



## Locking Proximal Humeral Plating System

WINSTA-PH2 offers an anatomical, narrow plate design with right and left plate variants for fixation of 2, 3 and 4 fragment fractures, reconstructable calotte fractures, pathological fractures and pseudarthrosis and correcting osteotomy.

WINSTA-PH2 plates feature 10 screw holes proximally and up to 17 screw holes distally. The screw holes can be equipped with locking screws and non locking screws.

# WINSTA-PH2

## Locking Proximal Humeral Plating System

### Thread fixation

of the rotation sleeve with six strongly rounded oblique holes at the edge of the proximal end of the plate

### Stabilization of near-neck fractures

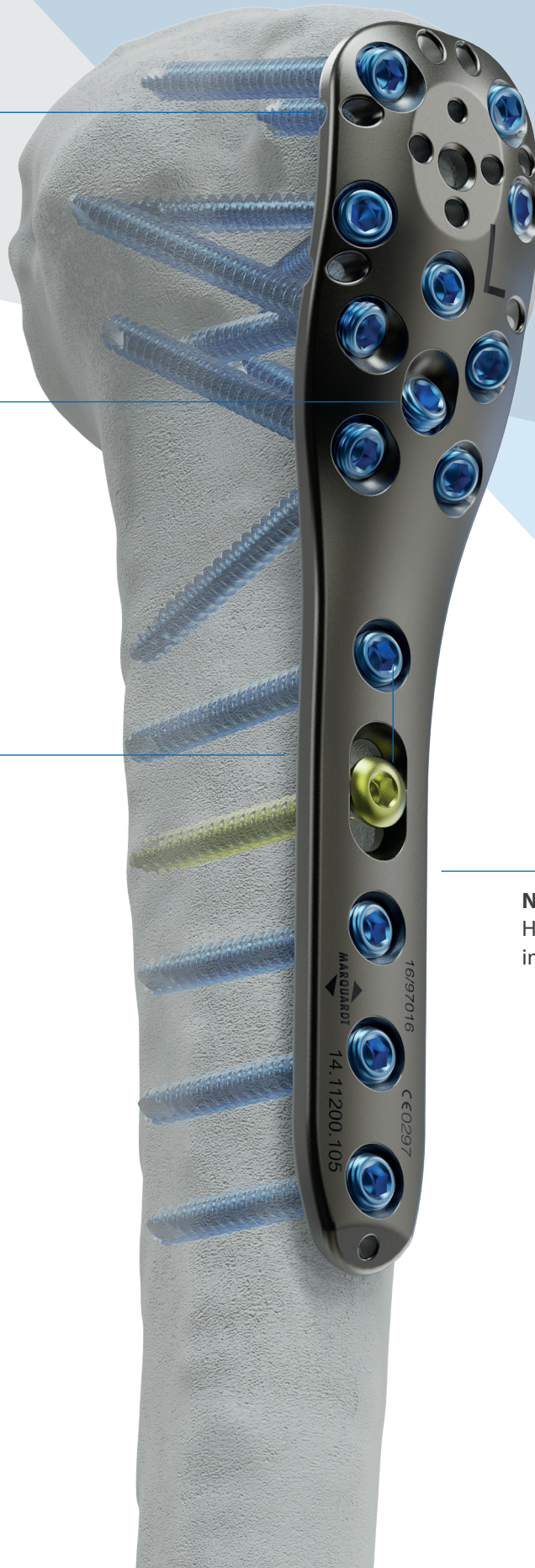
The patented distal screw axis at the screw axis at the transition area serves to support the head of the humerus

### Anatomically adapted design

Asymmetrical dorsal widening for secure fixation of the tuberculum maius

### Narrow plate

High stability with small implant dimension



**Percutaneous insertion**

With the aid of the appropriate insertion guide it is possible to treat fractures via percutaneous access

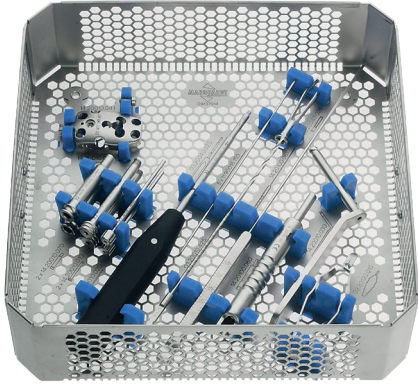


**Material**

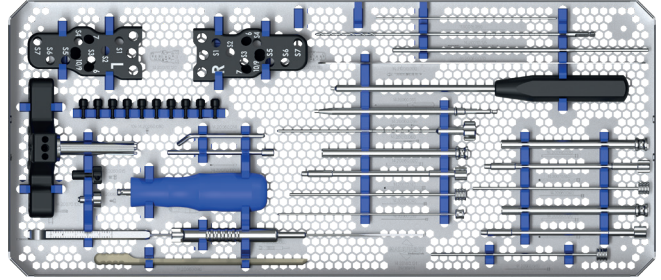
Titanium plate with type II anodisation

# WINSTA-PH2

## Locking Proximal Humeral Plating System



WINSTA-PH2 Instruments



WINSTA-PH2 MIS Instruments



WINSTA-PH2 Locking Proximal Humeral Plate

14.11200.1xx(S) links

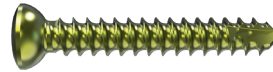
14.11200.0xx(S) rechts

right / left

Holes plate head 10

Holes plate shaft 3, 5, 7, 10, 12, 14, 17

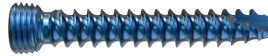
Length 85 - 269 mm



Cortical Scre  $\varnothing$  3.5 mm, self-tapping

03.03612.xxx(S)

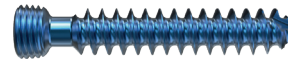
Length 20-60 mm



Locking Cortical Screw  $\varnothing$  3.5 mm, self-tapping

03.05612.xxx(S)

Length 20-60 mm



Locking Cancellous Bone Screw  $\varnothing$  4.0 mm, self-tapping

03.05640.xxxS

Length 20-60 mm

You can also find us on social networks:



Note:

This description is not sufficient for immediate application of the instruments. Further information is available in the detailed surgical technique.

Maintenance, care and preparation of Marquardt instruments can be found in the corresponding instructions.